

# Enclosures

PACOM Enclosures are designed for security. They can house a number of different hardware component combinations depending on the application and markets. They include a cover tamper switch, wall tamper switch and mounting plate.



## STANDARD ENCLOSURE



Wall-mount enclosure that is suitable for mounting the following combinations:

- x1 Controller (1057 / 1058 / 8002)
- x9 Single Card Reader Interfaces (1064)
- x4 Dual Card Reader Interfaces (1076)
- x2 I/O Expansion Boards (1065)
- x1 Power Supply (8308/8309) with battery backup
- x1 S1000 Controller + 2 SE Series expansion cards
- x1 2A Power supply

Dimensions: 40.5cm x 40.5cm x 12.0cm (15.9 x 15.9 x 4.7 ")

Packed Weight: 7.3kg (16.1lbs)

## DOOR CONTROLLER ENCLOSURE

Suitable for mounting the following combinations:

- x2 Single Door Controller (1064), or
- x1 2-Door Controller (1076).

Dimensions: 15.5cm x 25.5cm x 5.5cm (6.1 x 10 x 2.2 ")

Packed Weight: 1.7kg (3.8lbs)



## COMPACT ENCLOSURE



Suitable for mounting the following:

- x1 8003 Controller
- x1 8501 I/O Module or
- x1 8603 IP 2-Door Controller.

Dimensions: 20cm x 19cm x 4.5cm (7.9 x 7.5 x 1.8 ")

Packed Weight: 1kg (2.2lbs)

## ATM ENCLOSURE

Includes:

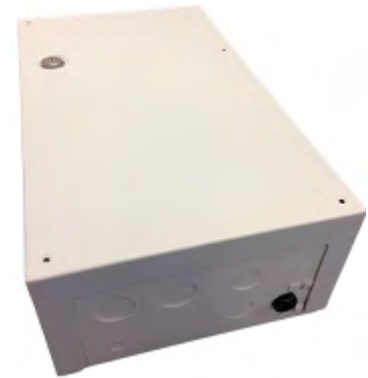
- keylock for extra security
- specially designed inlet for component cables and wires.

Suitable for housing the:

- x1 8003 Controller
- x1 8501 I/O Module
- x1 8603 IP 2-Door Controller or
- x1 8309 Power Supply.

Dimensions: 34cm x 20cm x 11cm (13.4 x 7.9 x 4.3 ")

Packed Weight: 3.7kg (8.2lbs)



## ORDERING INFORMATION

PART NO.	TYPE CODE	DESCRIPTION
400 071 002	PDENCL-10	PACOM Standard Enclosure
400 071 001	PDENCL-01	PACOM Standard Enclosure
400 072 001	PDENCL-02	PACOM Door Controller Enclosure
400 073 001	PDENCL-03	PACOM Compact Enclosure
400 076 001	PDENCL-06	PACOM ATM Enclosure