

DATASHEET**GMS ASSET MANAGEMENT – DEISTER PROXSAFE INTEGRATION****MAIN FEATURES**

- ▶ Synchronization between GMS cardholders and Deister proxSafe key users
- ▶ Display of key / asset cabinets on GMS site maps with status display
- ▶ Alarms generated by the Key management hardware automatically appear in GMS
- ▶ Link from GMS site maps to instantly display key cabinet status
- ▶ Reporting of "Key Not Returned" alarms to GMS
- ▶ Configurable security breach handling behavior (e.g., block GMS cardholder on breach)

PACOM GMS provides flexible key and asset management with complete control and monitoring of assets with its intelligent interface to Deister proxSafe Key Management System.

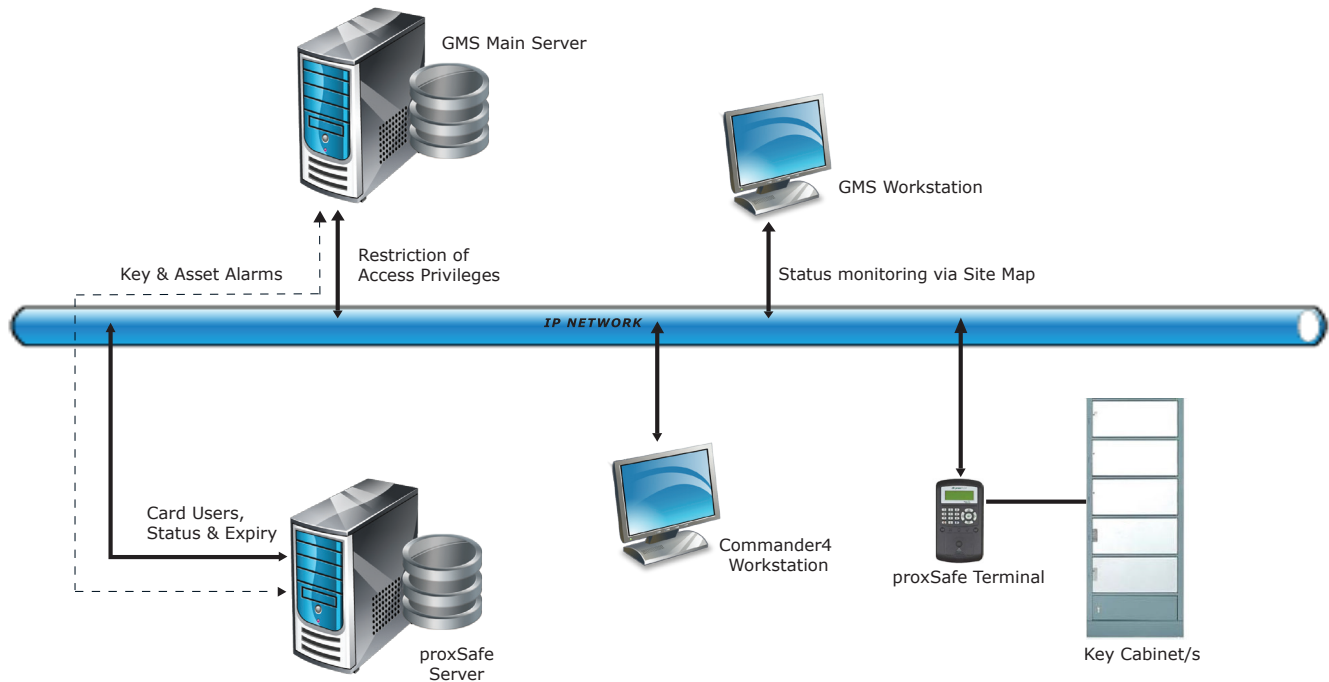
PACOM GMS DEISTER PROXSAFE INTEGRATION

Deister proxSafe is a key and asset management system used to effectively control and monitor valuable assets using high security, electronically controlled cabinets. In this way you can monitor who is accessing keys and assets, when, and immediately raise alerts when alarm conditions exist.

Integrating proxSafe with PACOM GMS system allows GMS operators to respond to alarms, perform actions and monitor the status of the key management system as part of their standard GMS security management solution.

Linking GMS cardholder data and proxSafe key users provides the ability to control access to individual keys using existing cardholder data and the automatic sharing of data between GMS and proxSafe ensures that secure access to critical assets is maintained at all times.

Electronically controlled key cabinets can be efficiently monitored from the convenience of the GMS workstation to see who is accessing keys and assets at any time. Alerts are immediately displayed when alarm conditions exist, enabling GMS operators to take timely action. For example, if it is detected that a cardholder has not returned a key or asset on time, card usage can be restricted to ensure security breaches are effectively managed.



FEATURES

Alarms supported

- Low Battery
- Cabinet lost/returned
- Terminal online/offline
- Tamper
- Cardholder duress
- User security breach
- System online/offline
- Operator lockout

Specifications

- 1-1 integration between GMS and Commander4
- One-way synchronization from cardholders maintained by GMS to key users maintained by ProxSafe

COMPATIBILITY

GMS:	4.20 SP4 or later
GMS API:	2.3 (enabled by GMS license)
Commander4:	4.2
ProxSafe Web Server:	2.2
Modules / licenses:	Server license, Access Control module license PACOM GMS interface license

ORDERING INFORMATION

PART NUMBER	TYPE CODE	DESCRIPTION
100 041 001	GMS-BASE	GMS 4.0. Starter kit including media and license file for one server, 5 PACOM controllers.
100 043 008	GMS-KEYLOCK	Enables integration with selected Key Management systems