

## FEATURES

- ▶ Simple snapshot of key security issues
- ▶ Trend analysis allows you to easily identify areas of improvement
- ▶ Change dashboard view on-the-fly
- ▶ Flexible and customizable dashboards on a per user basis
- ▶ Drill-down for more detail and descriptive reporting
- ▶ Export data as PDF or MS Excel
- ▶ Visual snapshot of security system performance
- ▶ Graphical display of system performance



The PACOM Security Portal is a web-based service that provides users with the ability to remotely run a number of applications that interact with the security database, using Microsoft's Internet Explorer web browser. The following applications are included:

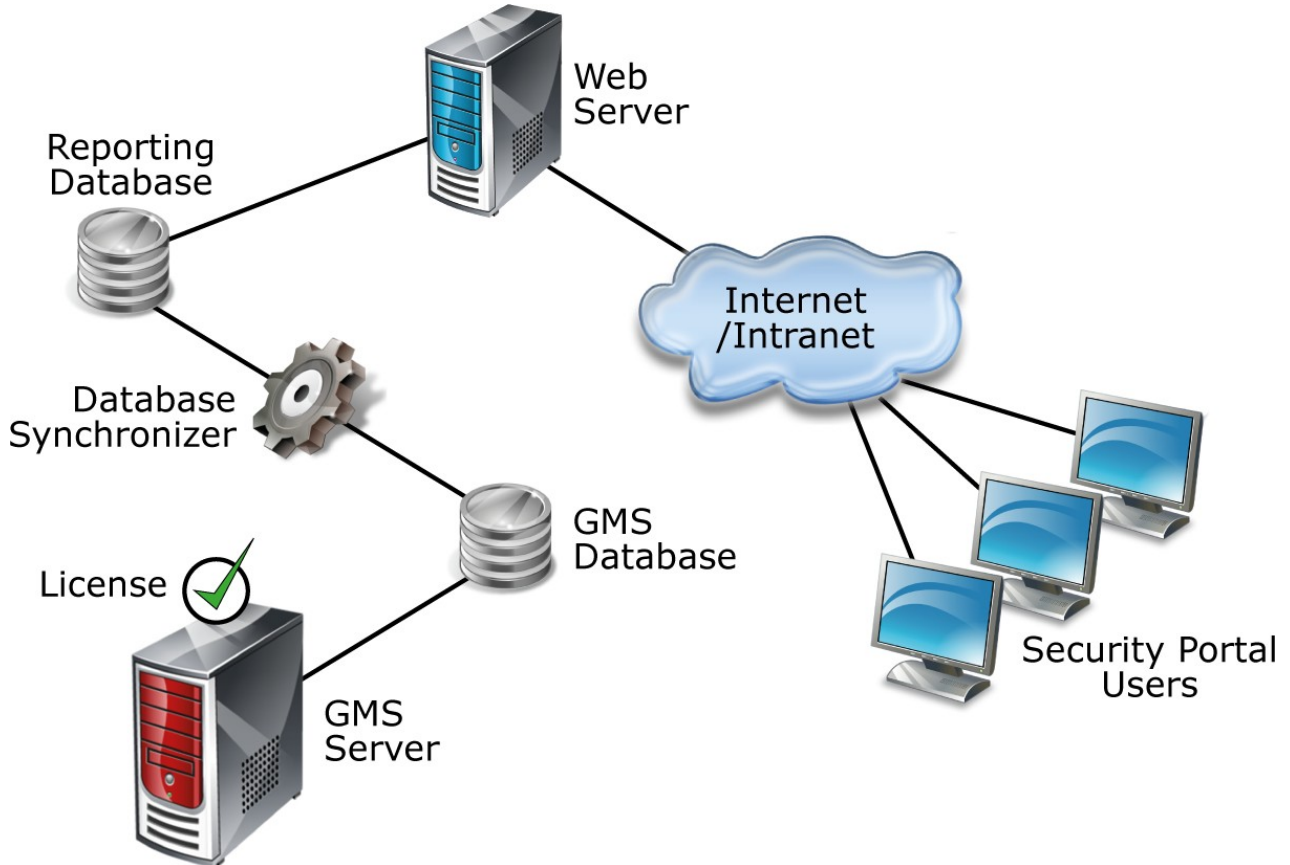
- **Reporting** - Access the GMS system database and create a range of reports from it.
- **Dashboard** - Provides you with "snapshots" of various aspects of the overall system in real-time, using graphical indicators. An interactive display that can be customized on the fly to highlight specific locations, transactions or timeframes, or step back to see the bigger picture.
- **Admin** - Access various administration features for managing users and roles and assigning Security Portal functionality.

The Security Portal has been designed to keep Executives and Security Managers on top of the vast amounts of information pouring into their security system daily.

The Security Portal provides a secure interface to GMS data, with full user authentication. You do not need any special software to access it, provided you are able to connect to the web server that is running the service and are authorized to use it.

***Unleash the power of your security system using an interactive dashboard to provide a single snapshot of key security issues.***

## ARCHITECTURE



## CAPACITY LIMITS

The Security Portal is limited to the following maximum values:

PARAMETER	LIMITATION
Unique Security Portal Operators	1,000
Number of Simultaneous Operators	Determined by the associated GMS license. When the maximum is reached, no other operators can log on until another operator logs off.
Users/Cardholders	1,000,000
Operator Roles	1,000
Sites	100,000
Site Groups	1,000

## ORDERING INFORMATION

PART NUMBER	TYPE CODE	DESCRIPTION
100 045 021	SP-WEB5	Security Portal license including support for 5 additional portal web clients
100 045 022	SP-WEB10	Security Portal license including support for 10 additional portal web clients
100 045 023	SP-WEB25	Security Portal license including support for 25 additional portal web clients
100 045 024	SP-WEB50	Security Portal license including support for 50 additional portal web clients