

FEATURES

- ▶ Stream live video in response to an alarm or event
- ▶ Recall recorded video directly from the Transaction Manager by double-clicking on the event
- ▶ Display live video by clicking on an icon in a graphical site map
- ▶ Pan, Tilt or Zoom (PTZ) the camera via onscreen controls or using a mouse
- ▶ Move the camera to a preset position or modify a preset position
- ▶ Save live image snapshots and video clips
- ▶ Stream audio from DVR to GMS
- ▶ Allows remote monitoring
- ▶ Supports scalability, so that unlimited cameras can be configured
- ▶ Drives consistency in security policies
- ▶ Real-time alerts

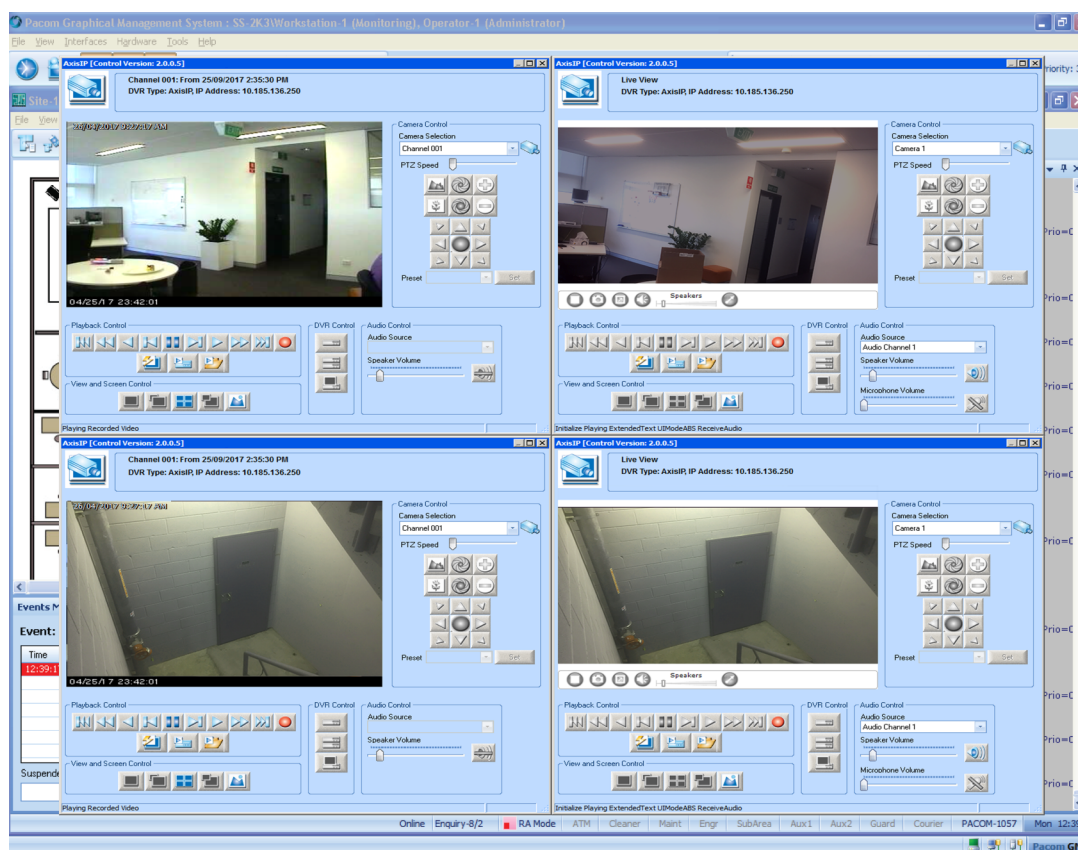


PACOM GMS Video Integration adds video surveillance to access control, intruder alarm and messaging to provide a complete integrated security solution that deters crime, ensures security 24/7, and enables the monitoring of multiple areas from a single location.

With this integration, operators have immediate access to video streams in response to an event or alarm from any GMS workstation. Live video streams allow operators to visually validate a threat, significantly reducing the incidence of false alarms. Camera icons can be added to GMS interactive site maps and linked to the cameras on site. Operators simply click on a camera icon to view live video from the related camera on site. If the cameras have PTZ capabilities, operators can use on-screen PTZ controls to move or reposition the camera, adjusting the view as required. Operators can also view recorded videos when 'actioning' events from a GMS workstation or when reviewing the Transaction Manager. Clicking on the status message or event displays the recorded footage synchronized with the time of the event.

PACOM GMS is a smart security management platform that provides the perfect surveillance and video verification solution with its ability to intelligently interface with many leading IP cameras, DVRs and VMS systems.

EXAMPLE



An example of the ViewPoint functionality.

SUPPORTED INTEGRATIONS

GMS has the ability to integrate with different video systems enables organizations to preserve their original investments and consolidate them into a modern management platform. PACOM is committed to supporting ongoing development of video device drivers in line with market opportunities and as new technologies emerge.

GMS currently offers integration with third party video systems from the following manufacturers:

| | | |
|---------------|------------------|-------------|
| Aimetis | Avigilon | Axis IP |
| Dahua | Dedicated Micros | exacqVision |
| FLIR (DVTEL) | GeutebruckH.264 | Hikvision |
| IC Realtime | Lanaccess | Lilin |
| March Generic | March R5 | Milestone |
| Mirasys | ONVIF | Panasonic |
| Samsung XNS | SCATI | Stanley |
| Vanguard | 3xLOGIC VIGIL | |

Refer to the PACOM GMS Video Integration Comparison Matrix , individual video integration feature sheets and respective manufacturer's documentation for further details.

COMPATIBILITY

| PRODUCT | VERSION |
|---------------------|---------------|
| PACOM GMS | 4.10 or later |
| PACOM DVR Framework | 10.4 |

ORDERING INFORMATION

| PART NUMBER | TYPE CODE | DESCRIPTION |
|-------------|--------------|--|
| 100 044 001 | GMS-VIDEOMON | GMS DVR Module License Includes support for 25 cameras. |
| 100 044 011 | GMS-CAM5 | GMS additional 5 Camera licenses |
| 100 044 012 | GMS-CAM10 | GMS additional 10 Camera licenses |
| 100 044 013 | GMS-CAM25 | GMS additional 25 Camera licenses |
| 100 044 014 | GMS-CAM50 | GMS additional 50 Camera licenses |
| 100 044 015 | GMS-CAM100 | GMS additional 100 Camera licenses |
| 100 044 016 | GMS-CAM500 | GMS additional 500 Camera licenses |