

FEATURES

- ▶ Real time verification of cardholders via visual monitoring
- ▶ Photos display as cardholders pass through access points
- ▶ Configure how long photos are displayed
- ▶ Automated scrolling photo display
- ▶ Retain photos of interest as long as required
- ▶ Easy to install and configure



PACOM GMS Virtigo allows GMS operators to visually identify and authenticate personnel moving through access points at a site. Virtigo adds an additional level of security and helps operators identify unauthorised entry to your site.

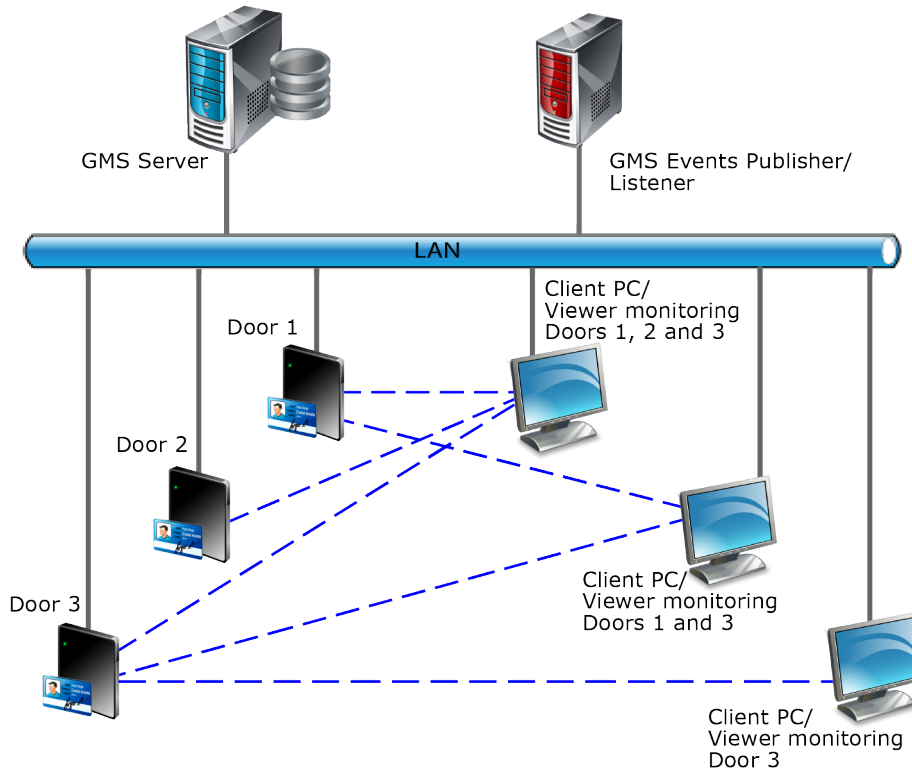
As an access card is used, Virtigo displays the cardholder's name and photo on the workstation. Operators can check the photo to easily verify that the person using the access card is the registered cardholder. The visual verification enables operators to quickly challenge unauthorised visitors and ensure that no one's entering your site without proper identification.

Using Virtigo, operators can:

- Monitor a scrolling display of cardholder photos
- Match users to the registered cardholder's photo
- Hold any photo for further analysis for as long as required, whilst other photos continue to scroll
- Monitor multiple access points from their workstation
- Monitor any access point from one or more workstations on the network.

PACOM GMS is the perfect multi-site security management platform, providing integration between access control, intrusion, video, intercom, and virtually any building management or security solution.

ARCHITECTURE



FEATURES

- Install and configure Virtigo viewer UI component separately on each operator's workstation
- Install and configure GSM Events Publisher and Virtigo Listener component on a single computer/server on the network
- Monitor each access point from one or more workstations
- Simple, uncomplicated operation - match the cardholder to the photo displayed on the workstation.

INSTALLATION REQUIREMENTS

Microsoft .NET Framework 4.0

COMPATIBILITY

PRODUCT	VERSION
PACOM GMS License	4.20 or later GMS API License

ORDERING INFORMATION

PART NUMBER	TYPE CODE	DESCRIPTION
100 041 001	GMS-BASE	GMS 4.0. Starter Kit Includes media and license file for 1 (one) server, 5 PACOM Controllers and 1 (one) workstation.
100 043 015	GMS-VIRTIGO	GMS Real-time rolling cardholder photo display. This allows the security guard to perform a visual verification of cardholders entering facility at a main entrance or turnstile.